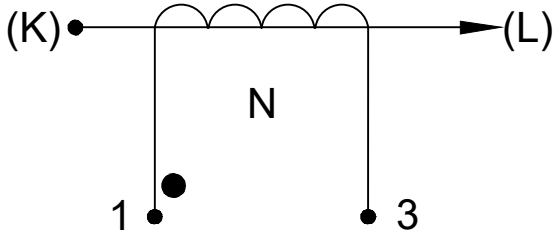




Product Type	PCB Mountable Current Transformer	
GT Part Number	L01-6200	Index
Customer Part Number	-----	
Customer	SCHUKAT	
Place of Manufacture	GT Electronic India	

SCHEMATIC:

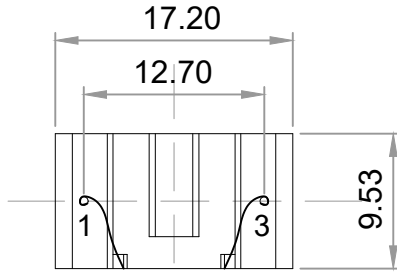


ELECTRICAL SPECIFICATION:

- ◆ Operating Frequency = 50/60Hz
- ◆ Operating Temp. Range = -40°C to +120°C
- ◆ Prim. to Sec. Isolation = 2.5kV / 50Hz / 2Sec

MECHANICAL SPECIFICATION:

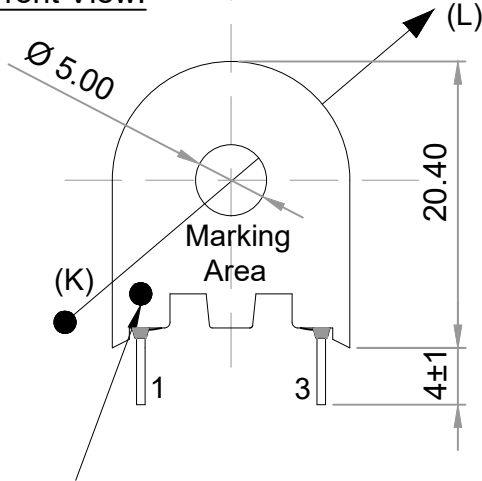
Bottom / Pin Side View:



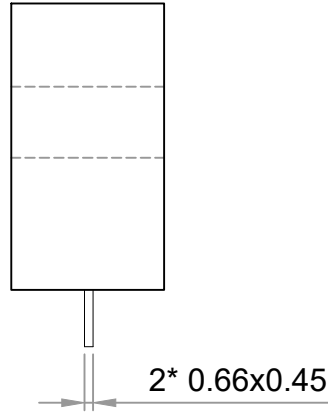
GT Part No.	Input Current (Ip) in Amps	Rated Load Burden (Rb) in Ohm	Output Voltage (Us) in mV
L01-6200	1 to 10	50	33.3 ±10%

GT Part No.	Marking information	Weight in g / pc	Packing Qty in pcs
L01-6200	L01-6200 GT YY/WK	7	475

Front View:



Side View:



All Dimensions are in mm
Linear Dimensional Tolerance ±0.2mm

This product may contain harmful substances, it may require proper disposal subject to statutory & regulatory laws defined by the local governance of its own country/region as applicable at the time of disposal.

Date:	Approval of Customer:
-------	-----------------------

-----Initial Issue-----	1	0	D.Kirubakaran	-	08-08-2024
Changes	Issue	Rev	Prepared	Reviewed	Date